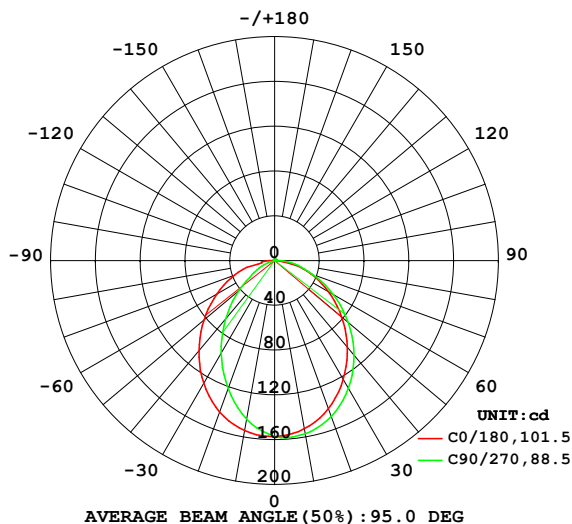


LUMINAIRE PHOTOMETRIC TEST REPORT

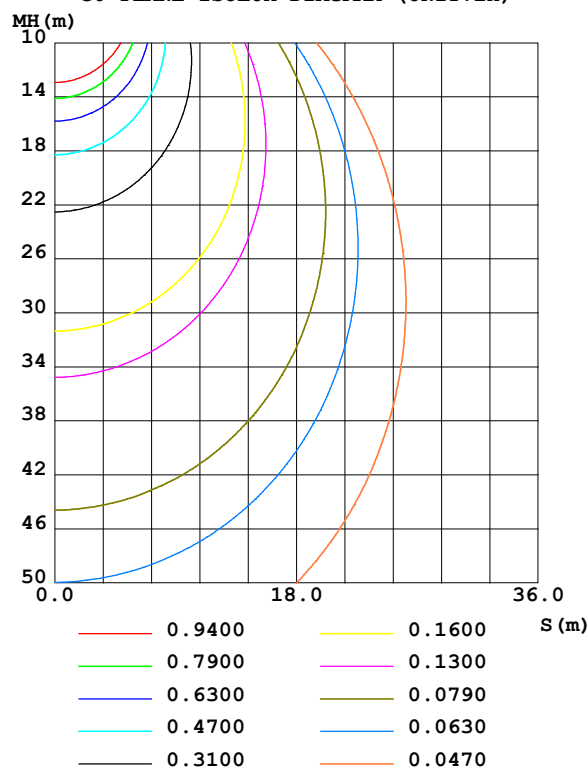
Test:U:220.68V I:0.0320A P:6.5112W PF:0.9230 Freq:49.99Hz UTHDi:0.00% ITHDi:0.00% KDisp:0 Lamp Flux:377.596x1 lm		
NAME: WL3173-D 2700K RA90	TYPE:	WEIGHT:
SPEC.:	DIM.:	SERIAL No.:
MFR.: VJC lighting	SUR.: 345*12	Shielding Angle:

DATA OF LAMP		PHOTOMETRIC DATA				Eff: 57.99 lm/W
MODEL	WL3173-D 2700K RA90	I _{max} (cd)	158.7	S/MH(C0/180)	1.20	
NOMINAL POWER(W)	6	LOR(%)	100.0	S/MH(C90/270)	0.96	
RATED VOLTAGE(V)	220	TOTAL FLUX(lm)	377.60	η UP,DN(C0-180)	1.4,55.8	
NOMINAL FLUX(lm)	377.596	CIE CLASS	DIRECT	η UP,DN(C180-360)	1.0,41.9	
LAMPS INSIDE	1	η up(%)	2.4	CIBSE SHR NOM	1.25	
TEST VOLTAGE(V)	220	η down(%)	97.6	CIBSE SHR MAX	1.30	

LUMINOUS INTENSITY DISTRIBUTION DIAGRAM



C0 PLANE ISOLUX DIAGRAM (UNIT:lx)



C Range: 0 - 360DEG
C Interval: 22.5DEG
Test Speed: HIGH
Temperature: 25.3 °C
Operators: 001
Test Date: 2024-10-10

γ Range: 0 - 180DEG
γ Interval: 2.0DEG
Test System: EVERFINE GO-2000B_V1 SYSTEM V2.00.456
Humidity: 65.0%
Test Distance: 8.370m [K=1.0000]
Remarks:

ZONAL FLUX DIAGRAM

ZONAL FLUX DIAGRAM:

γ	C0	C45	C90	C135	C180	C225	C270	C315	γ	Φ zone	Φ total	%lum, lamp
10	152.5	155.6	157.1	156.9	154.3	147.8	144.0	146.6	0- 10	14.73	14.73	3.9,3.9
20	140.7	145.3	148.3	148.4	143.9	132.0	121.5	125.6	10- 20	41.11	55.85	14.8,14.8
30	122.7	128.2	131.9	132.4	126.7	111.1	95.58	107.3	20- 30	59.30	115.1	30.5,30.5
40	101.1	106.2	110.4	111.1	105.3	87.50	68.15	84.51	30- 40	67.31	182.5	48.3,48.3
50	78.26	81.97	85.99	86.97	82.35	63.22	41.62	60.70	40- 50	65.26	247.7	65.6,65.6
60	55.72	57.91	60.63	62.68	59.51	40.64	21.22	38.45	50- 60	54.56	302.3	80.1,80.1
70	34.36	35.50	35.96	39.92	38.01	20.76	7.114	19.04	60- 70	38.90	341.2	90.4,90.4
80	8.192	16.77	18.58	20.27	11.84	3.817	0.2219	3.142	70- 80	20.78	362.0	95.9,95.9
90	0.9836	2.644	2.778	4.376	2.478	1.387	0.2692	0.4421	80- 90	6.709	368.7	97.6,97.6
100	1.097	2.361	1.157	2.589	1.048	1.256	0.5050	1.280	90-100	1.688	370.4	98.1,98.1
110	1.263	2.272	0.9623	2.434	1.158	1.571	0.7629	1.587	100-110	1.658	372.0	98.5,98.5
120	1.399	2.178	1.173	2.215	1.280	1.590	0.9708	1.463	110-120	1.614	373.6	98.9,98.9
130	1.460	1.940	1.256	1.929	1.377	1.359	1.046	1.358	120-130	1.412	375.0	99.3,99.3
140	0.9512	1.560	1.279	1.061	1.380	0.8672	0.9125	0.8991	130-140	1.033	376.1	99.6,99.6
150	0.8645	0.9616	1.082	0.9990	0.8730	0.9586	1.255	0.9687	140-150	0.6334	376.7	99.8,99.8
160	0.9364	1.008	1.089	1.143	0.9313	1.136	1.037	1.049	150-160	0.4829	377.2	99.9,99.9
170	1.028	0.9502	1.163	0.9906	1.006	1.017	1.051	1.066	160-170	0.3091	377.5	100,100
180	1.000	1.008	1.032	1.068	1.003	1.011	1.032	1.066	170-180	0.0979	377.6	100,100
DEG	LUMINOUS INTENSITY:cd									UNIT:lm		

Conical surface Flux(90deg): 222.49 lm

%lum = 58.9%

%lamp = 58.9%

Conical surface Flux(130deg): 327.72 lm

%lum = 86.8%

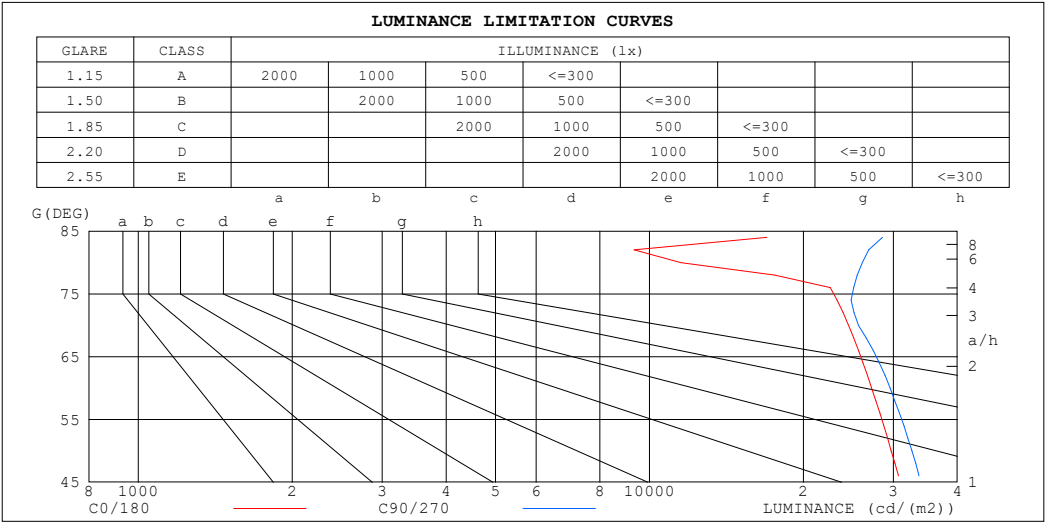
%lamp = 86.8%

C Range: 0 - 360DEG
C Interval: 22.5DEG
Test Speed: HIGH
Temperature:25.3℃
Operators:001
Test Date:2024-10-10

γ Range: 0 - 180DEG
 γ Interval: 2.0DEG
Test System:EVERFINE GO-2000B_V1 SYSTEM V2.00.456
Humidity:65.0%
Test Distance:8.370m [K=1.0000]
Remarks:

LUMINANCE LIMITATION CURVES

Test:U:220.68V I:0.0320A P:6.5112W PF:0.9230 Freq:49.99Hz		
UTHDi:0.00% ITHDi:0.00% KDisp:0 Lamp Flux:377.596x1 lm		
NAME: WL3173-D 2700K RA90	TYPE:	WEIGHT:
SPEC.:	DIM.:	SERIAL No.:
MFR.: VJC lighting	SUR.: 345*12	Shielding Angle:



LUMINANCE cd/(m2)		
G (DEG)	C0/180	C90/270
85	20352	34269
80	11514	26089
75	24792	26421
70	24521	25643
65	27137	29223
60	27201	29571
55	29428	32245
50	29715	32626
45	31755	34777

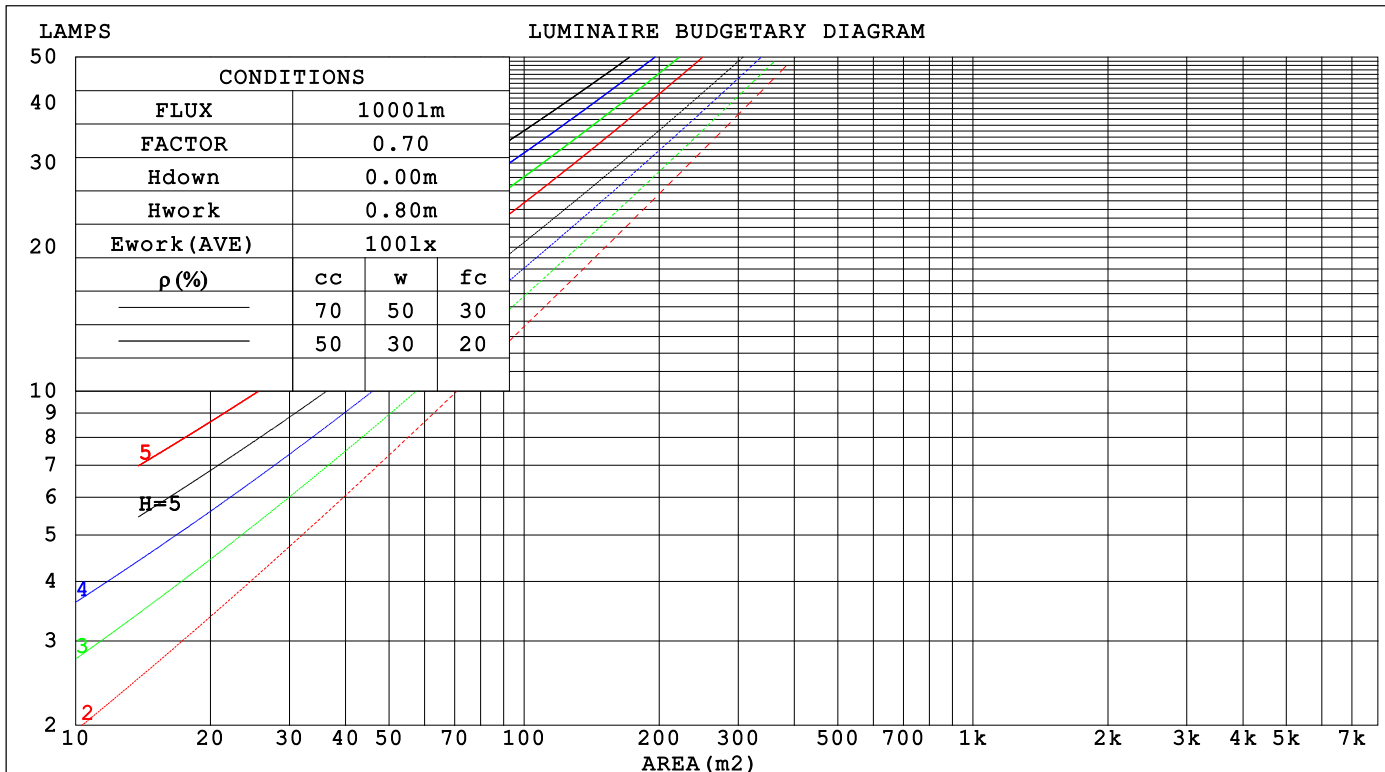
C Range: 0 - 360DEG
C Interval: 22.5DEG
Test Speed: HIGH
Temperature:25.3℃
Operators:001
Test Date:2024-10-10

γ Range: 0 - 180DEG
γ Interval: 2.0DEG
Test System:EVERFINE GO-2000B_V1 SYSTEM V2.00.456
Humidity:65.0%
Test Distance:8.370m [K=1.0000]
Remarks:

CU AND LUMINAIRE BUDGETARY ESTIMATE DIAGRAM

Test:U:220.68V I:0.0320A P:6.5112W PF:0.9230 Freq:49.99Hz		
UTHDi:0.00% ITHDi:0.00% KDisp:0 Lamp Flux:377.596x1 lm		
NAME: WL3173-D 2700K RA90	TYPE:	WEIGHT:
SPEC.:	DIM.:	SERIAL No.:
MFR.: VJC lighting	SUR.: 345*12	Shielding Angle:

pcc	80%			70%			50%			30%			10%			0
pw	50%	30%	10%	50%	30%	10%	50%	30%	10%	50%	30%	10%	50%	30%	10%	0
pfc	20%			20%			20%			20%			20%			0
RCR	RCR:Room Cavity Ratio Coefficients of Utilization(CU)															
0.0	1.18	1.18	1.18	1.15	1.15	1.15	1.10	1.10	1.10	1.05	1.05	1.05	.00	.00	.00	.98
1.0	1.04	1.00	.96	1.02	.98	.95	.97	.94	.91	.93	.90	.88	.89	.87	.85	.83
2.0	.92	.85	.80	.89	.83	.78	.86	.81	.76	.82	.78	.74	.79	.75	.72	.70
3.0	.81	.73	.67	.79	.72	.66	.76	.70	.65	.73	.68	.63	.70	.66	.62	.60
4.0	.72	.64	.57	.71	.63	.57	.68	.61	.56	.65	.59	.55	.63	.58	.54	.52
5.0	.65	.56	.50	.63	.55	.49	.61	.54	.49	.59	.53	.48	.57	.51	.47	.45
6.0	.59	.50	.44	.57	.49	.43	.55	.48	.43	.54	.47	.42	.52	.46	.42	.40
7.0	.53	.45	.39	.52	.44	.39	.51	.43	.38	.49	.43	.38	.47	.42	.37	.35
8.0	.49	.40	.35	.48	.40	.35	.46	.39	.34	.45	.39	.34	.44	.38	.34	.32
9.0	.45	.37	.31	.44	.37	.31	.43	.36	.31	.42	.35	.31	.40	.35	.31	.29
10.0	.42	.34	.29	.41	.34	.29	.40	.33	.28	.39	.32	.28	.38	.32	.28	.26



C Range: 0 - 360DEG
C Interval: 22.5DEG
Test Speed: HIGH
Temperature:25.3℃
Operators:001
Test Date:2024-10-10

γ Range: 0 - 180DEG
γ Interval: 2.0DEG
Test System:EVERFINE GO-2000B_V1 SYSTEM V2.00.456
Humidity:65.0%
Test Distance:8.370m [K=1.0000]
Remarks:

WEC AND CCEC

Test:U:220.68V I:0.0320A P:6.5112W PF:0.9230 Freq:49.99Hz			UTHDi:0.00% ITHDi:0.00% KDisp:0			Lamp Flux:377.596x1 lm		
NAME: WL3173-D 2700K RA90			TYPE:			WEIGHT:		
SPEC.:			DIM.:			SERIAL No.:		
MFR.: VJC lighting			SUR.: 345*12			Shielding Angle:		

pcc	80%			70%			50%			30%			10%			0	
pw	50%	30%	10%	50%	30%	10%	50%	30%	10%	50%	30%	10%	50%	30%	10%	0	
pfc	20%			20%			20%			20%			20%			0	
RCR	RCR:Room Cavity Ratio						Wall Exitance Coefficients(WEC)										
0.0																	
1.0	.293	.167	.053	.285	.163	.052	.271	.155	.050	.257	.148	.048	.245	.142	.046		
2.0	.276	.151	.046	.269	.148	.046	.256	.143	.044	.245	.137	.043	.234	.132	.042		
3.0	.256	.136	.041	.250	.134	.040	.239	.130	.039	.229	.125	.038	.219	.121	.037		
4.0	.238	.123	.036	.232	.122	.036	.222	.118	.035	.213	.114	.034	.204	.111	.034		
5.0	.220	.112	.033	.216	.111	.032	.207	.108	.032	.198	.105	.031	.191	.102	.031		
6.0	.205	.103	.029	.201	.101	.029	.193	.099	.029	.185	.096	.028	.178	.094	.028		
7.0	.191	.095	.027	.188	.093	.027	.180	.091	.026	.174	.089	.026	.167	.087	.026		
8.0	.179	.088	.025	.176	.087	.024	.169	.085	.024	.163	.083	.024	.157	.081	.024		
9.0	.168	.081	.023	.165	.081	.023	.159	.079	.022	.154	.077	.022	.149	.075	.022		
10.0	.159	.076	.021	.156	.075	.021	.151	.074	.021	.145	.072	.021	.141	.071	.020		

pcc	80%			70%			50%			30%			10%			0	
pw	50%	30%	10%	50%	30%	10%	50%	30%	10%	50%	30%	10%	50%	30%	10%	0	
pfc	20%			20%			20%			20%			20%			0	
RCR	RCR:Room Cavity Ratio						Ceiling Cavity Exitance Coefficients (CCEC)										
0.0	.208	.208	.208	.178	.178	.178	.122	.122	.122	.070	.070	.070	.022	.022	.022		
1.0	.197	.174	.154	.169	.150	.132	.115	.103	.092	.066	.060	.053	.021	.019	.017		
2.0	.188	.150	.118	.161	.129	.102	.111	.089	.071	.064	.052	.042	.020	.017	.014		
3.0	.180	.133	.095	.155	.114	.082	.106	.079	.058	.061	.046	.034	.020	.015	.011		
4.0	.172	.119	.078	.148	.103	.068	.102	.072	.048	.059	.042	.028	.019	.014	.009		
5.0	.165	.109	.067	.142	.094	.058	.098	.066	.041	.057	.039	.024	.018	.013	.008		
6.0	.158	.100	.059	.136	.087	.051	.094	.061	.036	.054	.036	.022	.018	.012	.007		
7.0	.151	.093	.053	.130	.081	.046	.090	.057	.033	.052	.033	.019	.017	.011	.006		
8.0	.145	.088	.048	.125	.076	.042	.086	.053	.030	.050	.031	.018	.016	.010	.006		
9.0	.139	.083	.045	.120	.072	.039	.083	.050	.028	.048	.030	.016	.016	.010	.005		
10.0	.134	.078	.042	.115	.068	.036	.080	.048	.026	.047	.028	.015	.015	.009	.005		

C Range: 0 - 360DEG
C Interval: 22.5DEG
Test Speed: HIGH
Temperature:25.3℃
Operators:001
Test Date:2024-10-10

γ Range: 0 - 180DEG
γ Interval: 2.0DEG
Test System:EVERFINE GO-2000B_V1 SYSTEM V2.00.456
Humidity:65.0%
Test Distance:8.370m [K=1.0000]
Remarks:

UGR(Unified Glare Rating) Table

Test:U:220.68V I:0.0320A P:6.5112W PF:0.9230 Freq:49.99Hz UTHDi:0.00% ITHDi:0.00% KDisp:0 Lamp Flux:377.596x1 lm											
NAME: WL3173-D 2700K RA90						TYPE:		WEIGHT:			
SPEC.:						DIM.:		SERIAL No.:			
MFR.: VJC lighting						SUR.: 345*12		Shielding Angle:			
ceiling/cavity	0.7	0.7	0.5	0.5	0.3	0.7	0.7	0.5	0.5	0.3	
walls	0.5	0.3	0.5	0.3	0.3	0.5	0.3	0.5	0.3	0.3	
working plane	0.2	0.2	0.2	0.2	0.2	0.2	0.2	0.2	0.2	0.2	
Room dimensions		Viewed crosswise					Viewed endwise				
x = 2H y = 2H		28.0	29.4	28.2	29.6	29.9	28.3	29.8	28.6	30.0	30.2
3H		29.3	30.7	29.7	30.9	31.2	29.7	31.1	30.1	31.3	31.6
4H		29.9	31.2	30.3	31.5	31.8	30.3	31.6	30.7	31.9	32.2
6H		30.1	31.3	30.5	31.6	32.0	30.9	32.1	31.3	32.4	32.7
8H		30.2	31.3	30.5	31.6	32.0	31.1	32.3	31.5	32.6	32.9
12H		30.2	31.3	30.6	31.7	32.0	31.3	32.4	31.7	32.7	33.1
4H 2H		28.5	29.8	28.9	30.1	30.4	28.9	30.1	29.2	30.4	30.7
3H		30.1	31.2	30.5	31.5	31.9	30.5	31.6	30.9	31.9	32.2
4H		30.8	31.8	31.2	32.2	32.6	31.2	32.2	31.6	32.6	33.0
6H		31.2	32.0	31.6	32.4	32.8	31.9	32.8	32.4	33.2	33.6
8H		31.2	32.0	31.7	32.4	32.9	32.2	33.1	32.7	33.5	33.9
12H		31.3	32.1	31.8	32.5	33.0	32.5	33.3	33.0	33.7	34.1
8H 4H		31.1	31.9	31.6	32.3	32.8	31.5	32.3	31.9	32.7	33.1
6H		31.6	32.3	32.1	32.7	33.2	32.4	33.0	32.8	33.5	34.0
8H		31.7	32.3	32.2	32.8	33.3	32.8	33.4	33.3	33.9	34.4
12H		31.9	32.4	32.4	32.9	33.4	33.2	33.7	33.7	34.2	34.7
12H 4H		31.1	31.9	31.6	32.3	32.8	31.5	32.2	31.9	32.6	33.1
6H		31.7	32.3	32.2	32.7	33.2	32.4	33.0	32.9	33.5	34.0
8H		31.9	32.4	32.4	32.9	33.4	32.9	33.4	33.4	33.9	34.4
Variations with the observer position at spacings(CIE Pub.117):											
S = 1.0H		+ 0.2 / - 0.2					+ 0.2 / - 0.2				
1.5H		+ 0.1 / - 0.3					+ 0.1 / - 0.3				
2.0H		+ 0.2 / - 0.3					+ 0.2 / - 0.3				

CIE Pub.117, 377.6 lm Total Lamp Luminous Flux Correct (8log(F/F0) = -3.4)
Area: 0.0041 m2

C Range: 0 - 360DEG
C Interval: 22.5DEG
Test Speed: HIGH
Temperature:25.3℃
Operators:001
Test Date:2024-10-10

γ Range: 0 - 180DEG
γ Interval: 2.0DEG
Test System:EVERFINE GO-2000B_V1 SYSTEM V2.00.456
Humidity:65.0%
Test Distance:8.370m [K=1.0000]
Remarks:

UTILIZATION FACTORS TABLE

Test:U:220.68V I:0.0320A P:6.5112W PF:0.9230 Freq:49.99Hz UTHDi:0.00% ITHDi:0.00% KDisp:0 Lamp Flux:377.596x1 lm		
NAME: WL3173-D 2700K RA90	TYPE:	WEIGHT:
SPEC.:	DIM.:	SERIAL No.:
MFR.: VJC lighting	SUR.: 345*12	Shielding Angle:

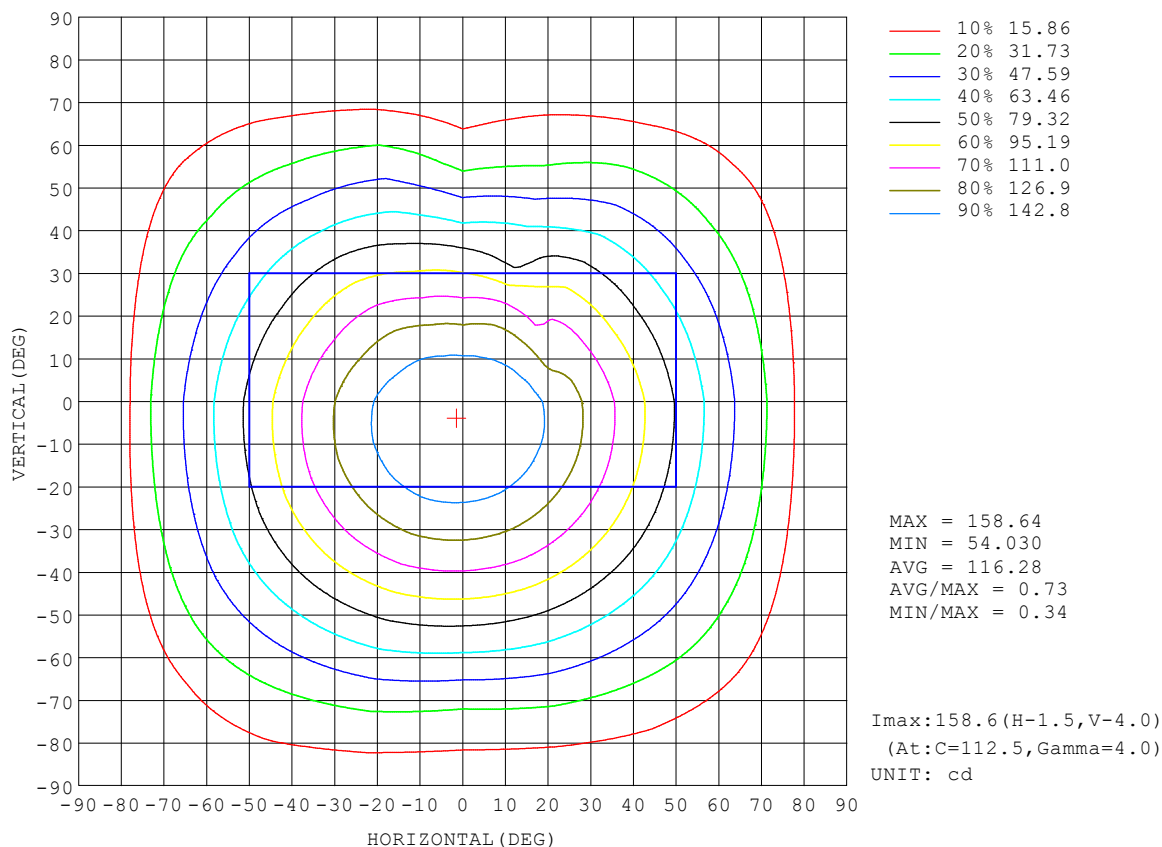
REFLECTANCE										
Ceiling	0.8	0.8	0.8	0.7	0.7	0.7	0.5	0.5	0.5	0
Walls	0.7	0.5	0.3	0.7	0.5	0.3	0.7	0.5	0.3	0
Working plane	0.2	0.2	0.2	0.2	0.2	0.2	0.2	0.2	0.2	0
ROOM INDEX	UTILIZATION FACTORS (PERCENT) $k(RI) \times RCR = 5$									
$k = 0.60$	60	48	42	59	48	42	58	48	41	35
0.80	69	58	51	68	58	51	67	57	51	44
1.00	78	67	60	76	66	60	74	67	59	52
1.25	85	75	68	83	74	67	80	72	66	59
1.50	89	80	73	88	79	73	84	77	71	64
2.00	96	88	81	94	86	81	90	84	79	71
2.50	99	92	86	97	91	85	93	88	83	75
3.00	103	96	91	100	94	90	96	91	87	78
4.00	106	101	96	104	99	95	99	95	92	83
5.00	109	104	100	106	102	98	101	98	95	85
ROOM INDEX	UF (total)									Direct
According to DIN EN 13032-2 2004			Suspended					SHRNOM = 1.25		

C Range: 0 - 360DEG
C Interval: 22.5DEG
Test Speed: HIGH
Temperature:25.3℃
Operators:001
Test Date:2024-10-10

γ Range: 0 - 180DEG
γ Interval: 2.0DEG
Test System:EVERFINE GO-2000B_V1 SYSTEM V2.00.456
Humidity:65.0%
Test Distance:8.370m [K=1.0000]
Remarks:

ISOCANDELA DIAGRAM

Test:U:220.68V I:0.0320A P:6.5112W PF:0.9230 Freq:49.99Hz UTHDi:0.00% ITHDi:0.00% KDisp:0 Lamp Flux:377.596x1 lm		
NAME: WL3173-D 2700K RA90	TYPE:	WEIGHT:
SPEC.:	DIM.:	SERIAL No.:
MFR.: VJC lighting	SUR.: 345*12	Shielding Angle:

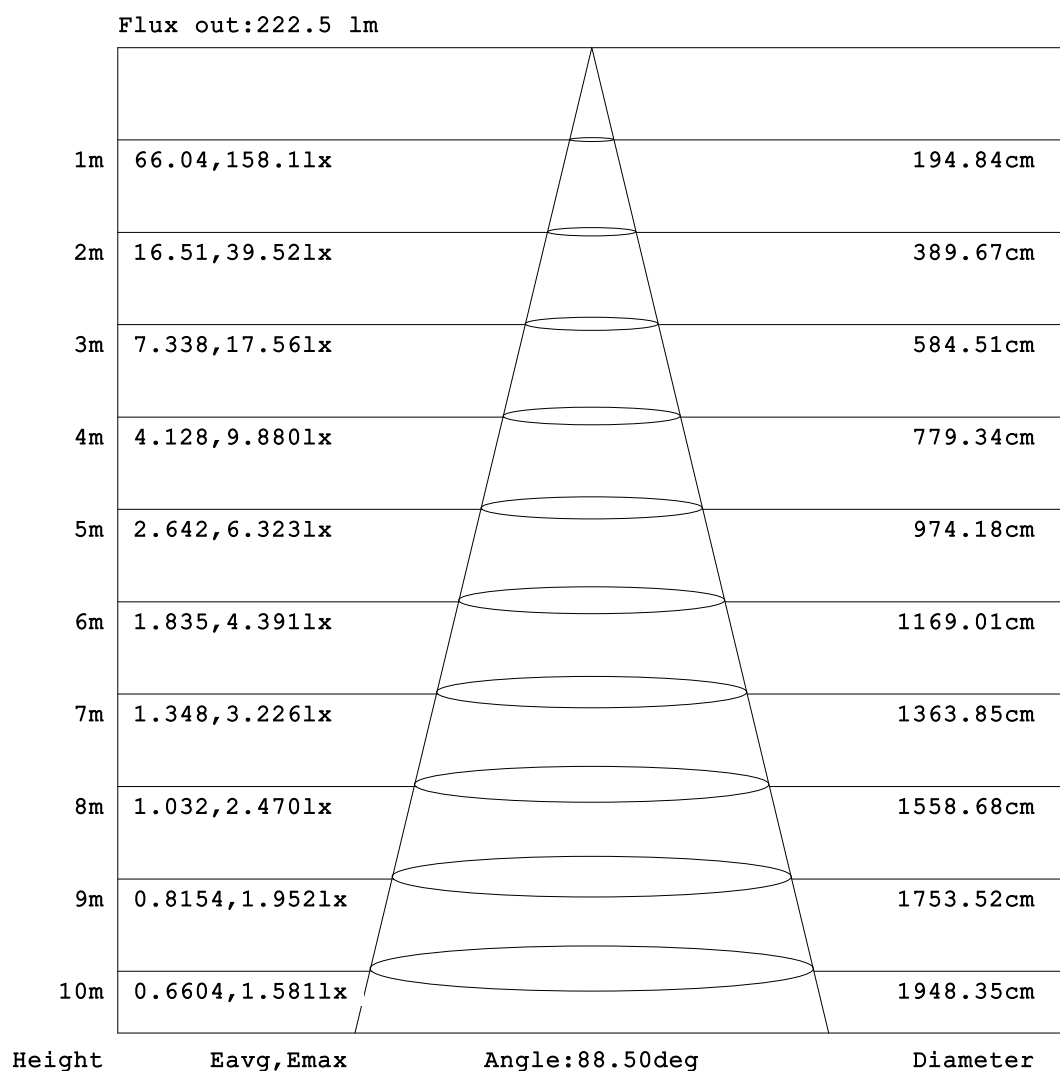


C Range: 0 - 360DEG
C Interval: 22.5DEG
Test Speed: HIGH
Temperature:25.3℃
Operators:001
Test Date:2024-10-10

γ Range: 0 - 180DEG
γ Interval: 2.0DEG
Test System:EVERFINE GO-2000B_V1 SYSTEM V2.00.456
Humidity:65.0%
Test Distance:8.370m [K=1.0000]
Remarks:

AAI Figure

Test:U:220.68V I:0.0320A P:6.5112W PF:0.9230 Freq:49.99Hz UTHDi:0.00% ITHDi:0.00% KDisp:0 Lamp Flux:377.596x1 lm		
NAME: WL3173-D 2700K RA90	TYPE:	WEIGHT:
SPEC.:	DIM.:	SERIAL No.:
MFR.: VJC lighting	SUR.: 345*12	Shielding Angle:



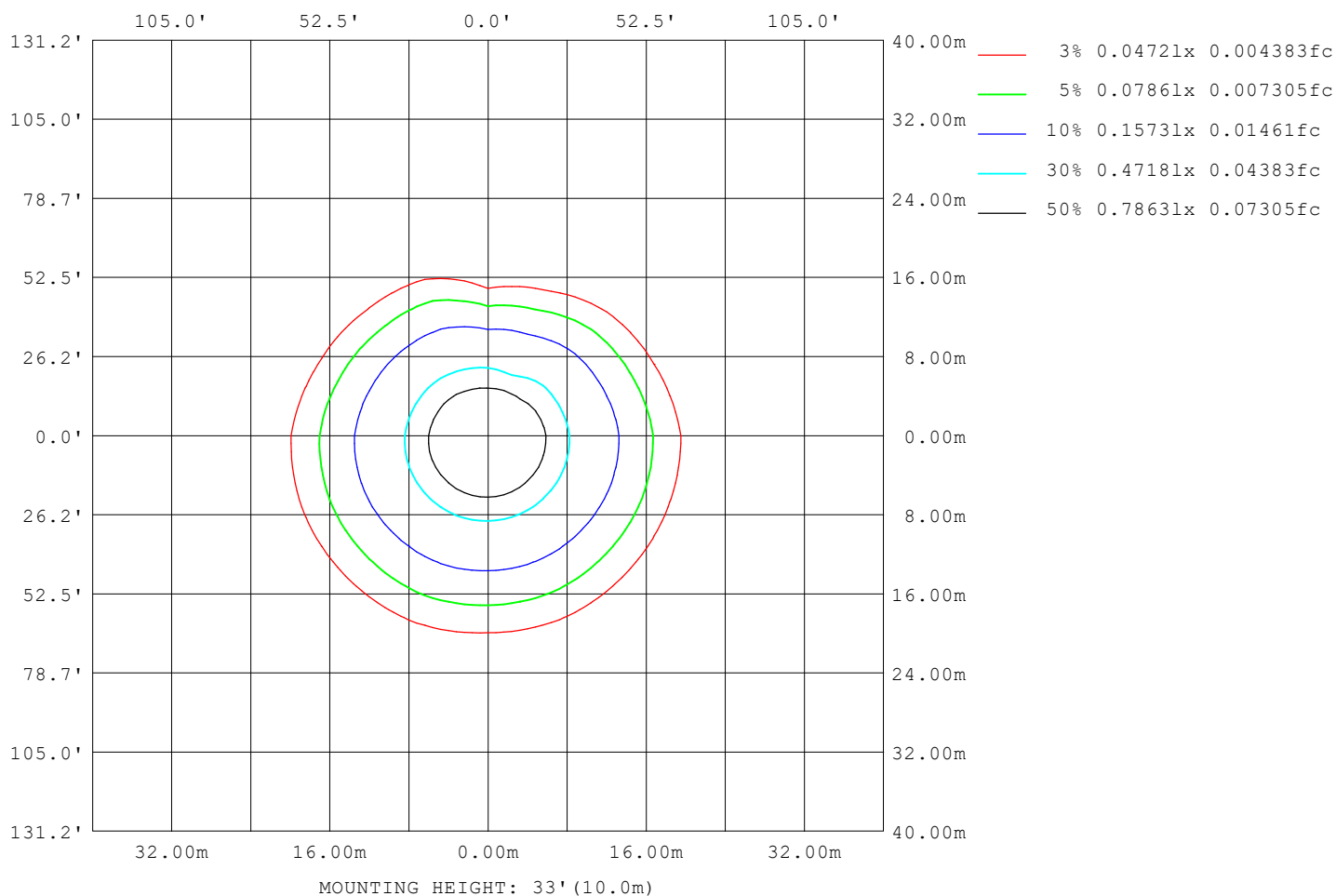
Note:The Curves indicate the illuminated area and the average illumination when the luminaire is at different distance.

C Range: 0 - 360DEG
C Interval: 22.5DEG
Test Speed: HIGH
Temperature:25.3℃
Operators:001
Test Date:2024-10-10

γ Range: 0 - 180DEG
γ Interval: 2.0DEG
Test System:EVERFINE GO-2000B_V1 SYSTEM V2.00.456
Humidity:65.0%
Test Distance:8.370m [K=1.0000]
Remarks:

ISOLUX DIAGRAM

Test:U:220.68V I:0.0320A P:6.5112W PF:0.9230 Freq:49.99Hz UTHDi:0.00% ITHDi:0.00% KDisp:0 Lamp Flux:377.596x1 lm		
NAME: WL3173-D 2700K RA90	TYPE:	WEIGHT:
SPEC.:	DIM.:	SERIAL No.:
MFR.: VJC lighting	SUR.: 345*12	Shielding Angle:



C Range: 0 - 360DEG
C Interval: 22.5DEG
Test Speed: HIGH
Temperature: 25.3°C
Operators: 001
Test Date: 2024-10-10

γ Range: 0 - 180DEG
γ Interval: 2.0DEG
Test System: EVERFINE GO-2000B_V1 SYSTEM V2.00.456
Humidity: 65.0%
Test Distance: 8.370m [K=1.0000]
Remarks:

LED Avg.L Report

Test:U:220.68V I:0.0320A P:6.5112W PF:0.9230 Freq:49.99Hz UTHDi:0.00% ITHDi:0.00% KDisp:0 Lamp Flux:377.596x1 lm		
NAME: WL3173-D 2700K RA90	TYPE:	WEIGHT:
SPEC.:	DIM.:	SERIAL No.:
MFR.: VJC lighting	SUR.: 345*12	Shielding Angle:

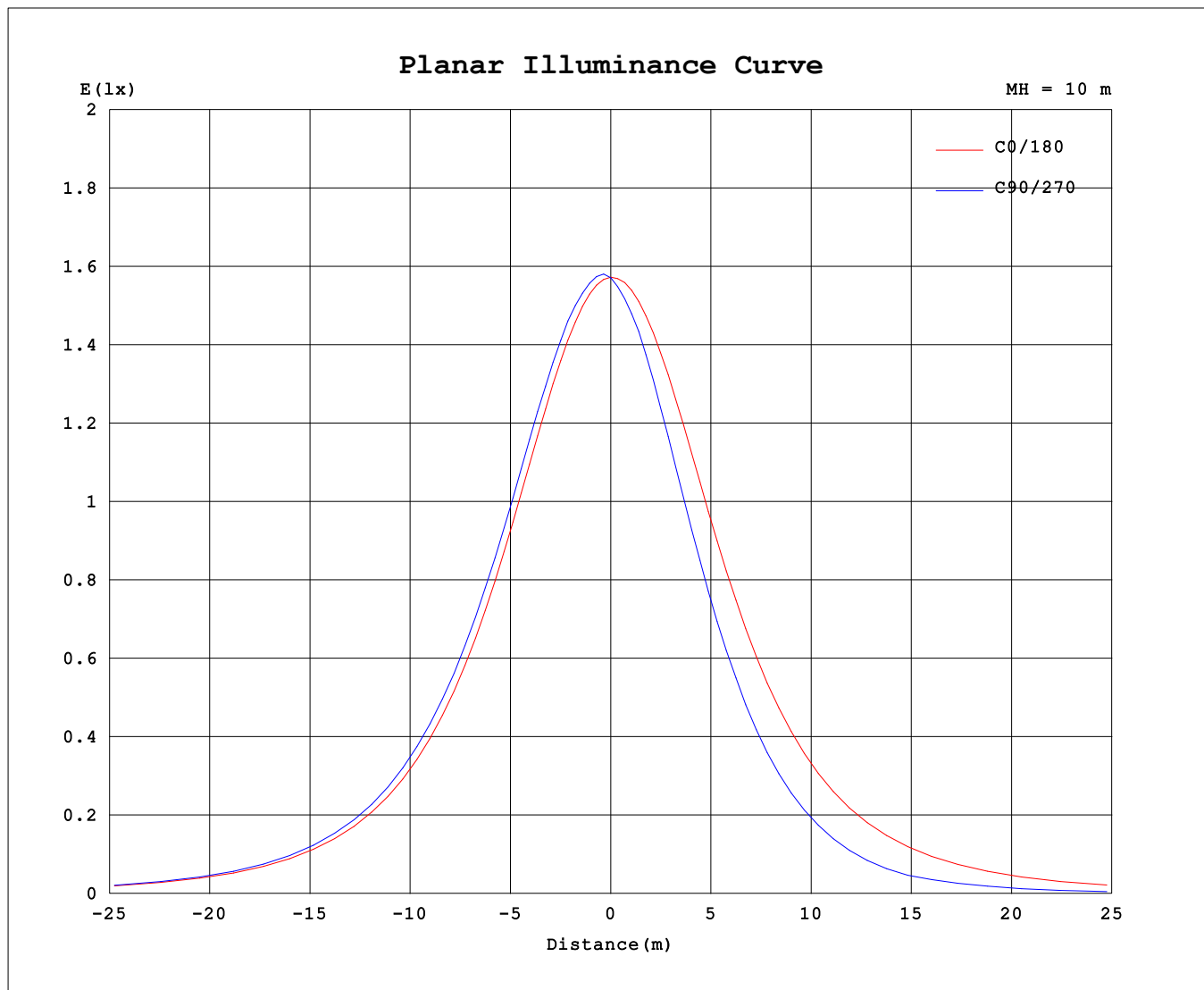
AvgL	cd/m2
L_0~180 (65) av	26936
L_0~180 (75) av	24853
L_0~180 (85) av	23364
L_90~270 (65) av	17991
L_90~270 (75) av	12541
L_90~270 (85) av	15182
L_45 (65) av	22576
L_45 (75) av	18076
L_45 (85) av	15221

Standard: GB/T 29293-2012

C Range: 0 - 360DEG
C Interval: 22.5DEG
Test Speed: HIGH
Temperature:25.3℃
Operators:001
Test Date:2024-10-10

γ Range: 0 - 180DEG
γ Interval: 2.0DEG
Test System:EVERFINE GO-2000B_V1 SYSTEM V2.00.456
Humidity:65.0%
Test Distance:8.370m [K=1.0000]
Remarks:

Planar Illuminance Curve



C Range: 0 - 360DEG
C Interval: 22.5DEG
Test Speed: HIGH
Temperature: 25.3 °C
Operators: 001
Test Date: 2024-10-10

γ Range: 0 - 180DEG
γ Interval: 2.0DEG
Test System: EVERFINE GO-2000B_V1 SYSTEM V2.00.456
Humidity: 65.0%
Test Distance: 8.370m [K=1.0000]
Remarks:

LUMINOUS DISTRIBUTION INTENSITY DATA

Test:U:220.68V I:0.0320A P:6.5112W PF:0.9230 Freq:49.99Hz		
UTHDi:0.00% ITHDi:0.00% KDisp:0 Lamp Flux:377.596x1 lm		
NAME: WL3173-D 2700K RA90	TYPE:	WEIGHT:
SPEC.:	DIM.:	SERIAL No.:
MFR.: VJC lighting	SUR.: 345*12	Shielding Angle:

Table--1

UNIT: cd

C (DEG) γ (DEG)	0	22.5	45	67.5	90	112.5	135	157.5	180	202.5	225	247.5	270	292.5	315	337.5			
0	157	157	157	157	157	157	157	157	157	157	157	157	157	157	157	157			
5	156	157	158	158	159	159	158	158	157	155	154	153	153	153	154	155			
10	153	155	156	156	157	157	157	157	154	150	148	145	144	145	147	149			
15	149	151	152	154	155	155	155	154	151	146	142	138	136	137	141	144			
20	141	143	145	147	148	149	148	147	144	137	132	125	122	125	126	129			
25	134	137	139	141	142	143	143	141	138	130	124	116	112	114	112	123			
30	123	126	128	131	132	133	132	131	127	118	111	101	95.6	91.6	107	114			
35	114	117	120	122	124	125	124	123	119	109	102	91.2	84.6	77.3	98.6	105			
40	101	104	106	109	110	112	111	109	105	95.3	87.5	77.3	68.2	70.9	84.5	91.5			
45	92.0	94.7	96.7	99.4	101	102	102	100	96.2	85.8	77.8	68.9	57.4	61.2	75.0	82.1			
50	78.3	80.5	82.0	84.6	86.0	87.5	87.0	86.0	82.3	71.6	63.2	56.6	41.6	46.6	60.7	68.2			
55	69.2	71.0	72.1	74.6	75.8	77.9	77.2	76.5	73.1	62.3	53.8	48.3	31.6	38.0	51.4	59.1			
60	55.7	56.9	57.9	60.2	60.6	63.5	62.7	62.4	59.5	48.7	40.6	35.7	21.2	27.1	38.5	45.8			
65	47.0	47.7	48.7	51.0	50.6	54.0	53.4	53.2	50.7	39.9	32.4	27.4	15.5	22.3	30.4	37.2			
70	34.4	34.4	35.5	37.3	36.0	39.8	39.9	39.6	38.0	28.2	20.8	15.7	7.11	13.7	19.0	25.2			
75	26.3	26.3	27.0	29.2	28.0	31.5	31.2	31.1	29.8	20.6	14.1	8.40	0.41	7.46	12.2	18.4			
80	8.19	12.7	16.8	18.8	18.6	21.2	20.3	15.7	11.8	6.63	3.82	3.79	0.22	3.38	3.14	4.64			
85	7.27	7.26	9.60	11.6	12.2	14.0	13.4	13.0	11.5	8.11	0.34	1.17	0.22	0.87	0.34	2.01			
90	0.98	1.78	2.64	3.20	2.78	4.29	4.38	3.87	2.48	1.85	1.39	0.79	0.27	0.50	0.44	0.73			
95	1.07	1.79	2.55	2.91	1.35	3.18	2.86	2.04	1.02	0.82	0.72	0.63	0.35	0.59	0.81	0.95			
100	1.10	1.80	2.36	2.46	1.16	2.70	2.59	1.99	1.05	1.14	1.26	0.93	0.50	0.84	1.28	1.32			
105	1.11	1.85	2.27	2.18	0.99	2.39	2.46	1.99	1.07	1.37	1.48	1.17	0.59	1.02	1.45	1.50			
110	1.26	1.99	2.27	1.99	0.96	2.16	2.43	1.96	1.16	1.58	1.57	1.17	0.76	1.13	1.59	1.74			
115	1.33	1.96	2.29	1.97	1.05	2.11	2.41	1.91	1.20	1.63	1.59	1.23	0.86	1.21	1.62	1.76			
120	1.40	1.87	2.18	1.98	1.17	2.09	2.21	1.80	1.28	1.63	1.59	1.23	0.97	1.15	1.46	1.76			
125	1.44	1.82	2.10	1.90	1.22	1.98	2.09	1.74	1.31	1.59	1.59	1.17	1.02	1.16	1.64	1.75			
130	1.46	1.77	1.94	1.78	1.26	1.82	1.93	1.68	1.38	1.59	1.36	1.03	1.05	1.14	1.36	1.72			
135	1.49	1.68	1.20	1.70	1.27	1.72	1.22	1.64	1.42	1.59	0.94	1.07	1.11	1.02	0.91	1.78			
140	0.95	1.00	1.56	1.52	1.28	1.52	1.06	1.12	1.38	1.09	0.87	0.90	0.91	0.92	0.90	0.98			
145	0.84	1.01	1.00	1.02	1.15	1.10	0.99	1.03	0.81	0.88	0.89	0.90	1.03	0.92	0.92	0.93			
150	0.86	1.04	0.96	0.85	1.08	0.90	1.00	1.05	0.87	0.90	0.96	1.10	1.25	1.05	0.97	1.14			
155	0.87	1.05	0.96	0.89	0.86	0.92	1.00	1.03	0.88	1.36	1.07	1.05	1.01	1.03	1.16	1.49			
160	0.94	1.38	1.01	1.06	1.09	0.97	1.14	1.39	0.93	1.36	1.14	1.02	1.04	1.05	1.05	1.20			
165	1.05	1.14	0.96	1.12	1.34	1.13	1.08	1.38	1.02	1.03	1.03	1.02	1.05	1.05	1.07	1.07			
170	1.03	0.98	0.95	1.02	1.16	1.02	0.99	1.03	1.01	1.02	1.02	1.02	1.05	1.06	1.07	1.07			
175	1.00	1.00	0.97	1.01	1.01	1.03	1.02	1.06	1.01	1.01	1.02	1.03	1.05	1.06	1.07	1.07			
180	1.00	1.01	1.01	1.02	1.03	1.05	1.07	1.07	1.00	1.01	1.01	1.03	1.03	1.06	1.07	1.07			

C Range: 0 - 360DEG

C Interval: 22.5DEG

Test Speed: HIGH

Temperature:25.3℃

Operators:001

Test Date:2024-10-10

γ Range: 0 - 180DEG

γ Interval: 2.0DEG

Test System:EVERFINE GO-2000B_V1 SYSTEM V2.00.456

Humidity:65.0%

Test Distance:8.370m [K=1.0000]

Remarks: